

WEGENERATIVE

Report prepared by Sophia Nielsen
WeGenerative@gmail.com
Admin@wegenerative.com



WASTE

DIVERSION REPORT

SALMONFEST 2024

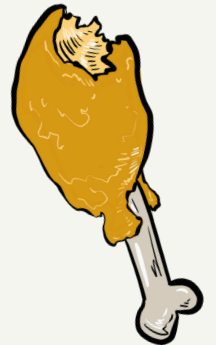
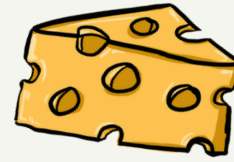
OPERATION IMPACT

2024 SUCCESSES

- ✓ Facilitated the diversion of **6173 LBS** of waste, with a volume of 42 cubic yards
- ✓ Sorted **4153.5 LBS** of **recycling**, including cardboard, glass, aluminum, plastic, steel, and mixed paper.
- ✓ Supported the Salmonfest kitchen to donate **792 LBS** of food back to the Ninilchik Food Bank.
- ✓ Diverted **2019.6 lbs of compost** to local farmer for compost.

Since an approximate 3.8 lbs of greenhouse gas emissions are saved for every pound of food waste,* a total of 7674 lbs of GHG emissions were saved.

35%
OF ALL SALMONFEST WASTE
SORTED AND SAVED
FROM THE LANDFILL
TO BE DIVERTED



7674 LBS OF EMISSIONS PREVENTED

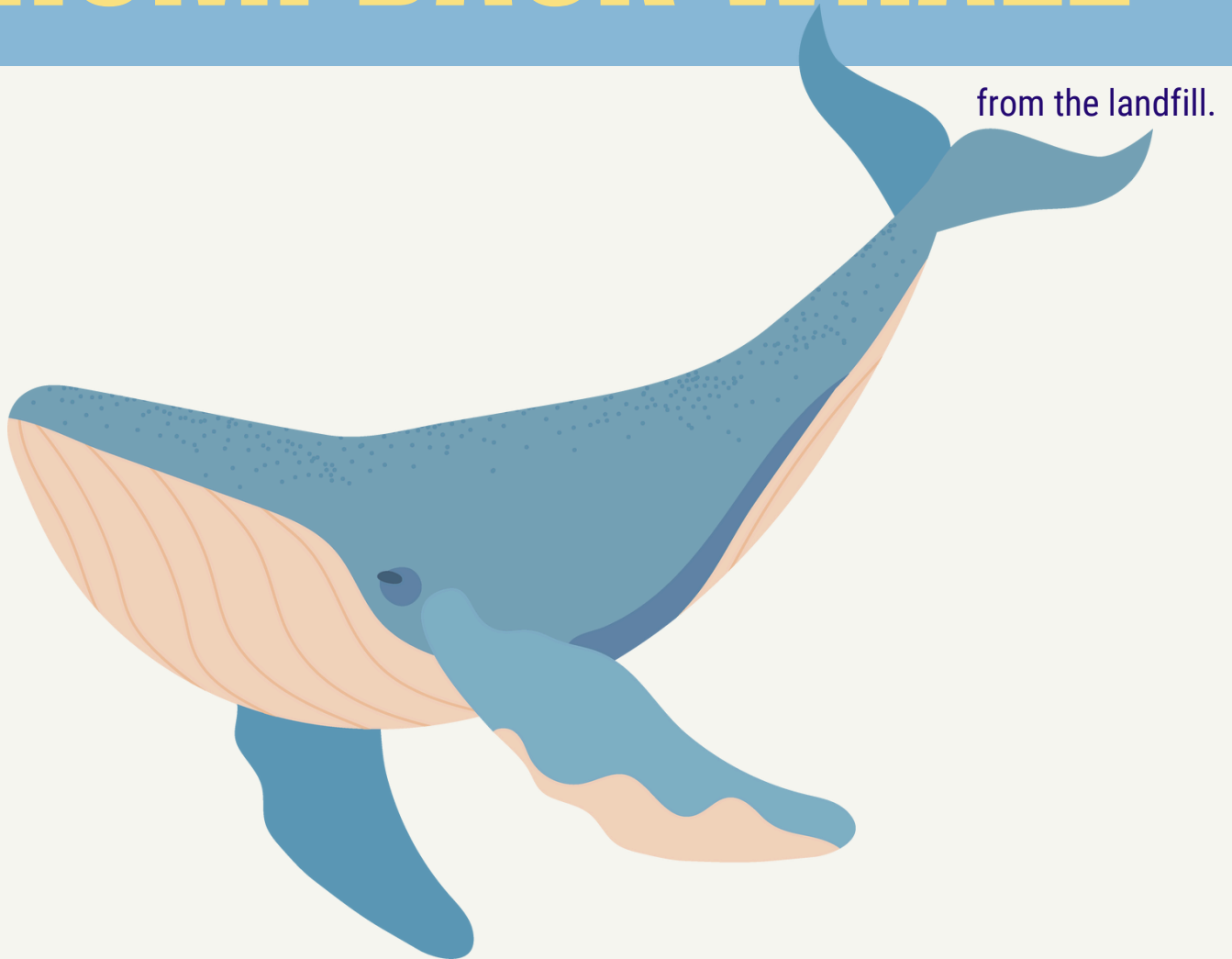
The emissions saved by diverting food scraps is the equivalent of what would be produced by a typical gas-powered car driving 8600 miles. **That's like driving from Alaska to Florida and back!**



44 CUBIC YARDS OF WASTE SAVED is hard to visualize. Instead, let's say

WE DIVERTED THE VOLUMETRIC EQUIVALENT OF...

1 HUMPBACK WHALE



from the landfill.

A fully grown humpback whale has an estimated volume of 40-50 cubic yards, based on its average dimensions of 45 feet in length, 10 feet in width, and 6 feet in height. Approximating the whale as a cylinder, we use the volume formula $V = \pi r^2 h$, where the radius (r) is 5 feet (half the width) and the height (h) is 45 feet. This yields an initial estimate of 3,534 cubic feet. Converting to cubic yards (1 cubic yard = 27 cubic feet), we get approximately 131 cubic yards. Since a whale's body tapers at both ends, we apply a reduction factor of 60-70%, giving a final estimated volume between 40 and 50 cubic yards.

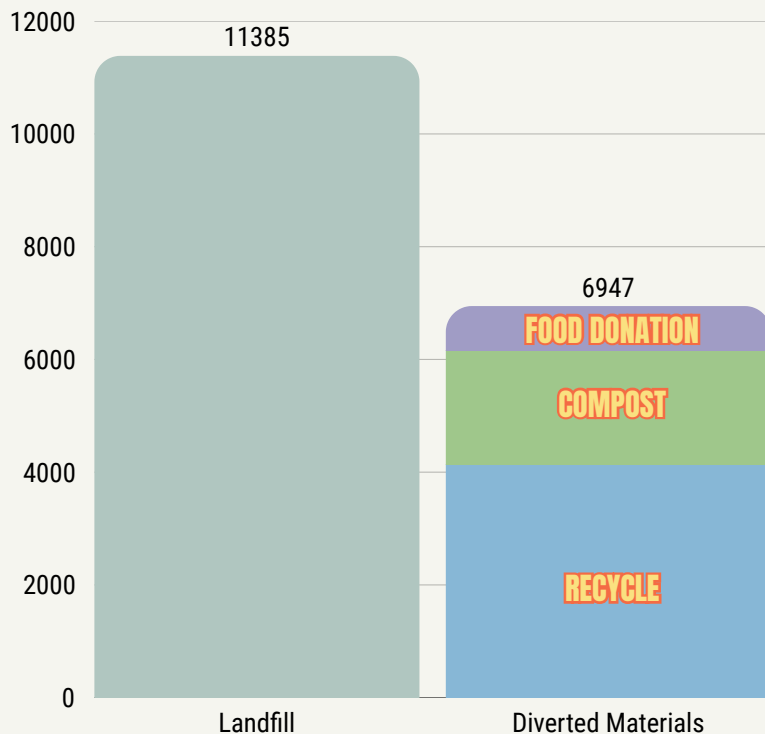
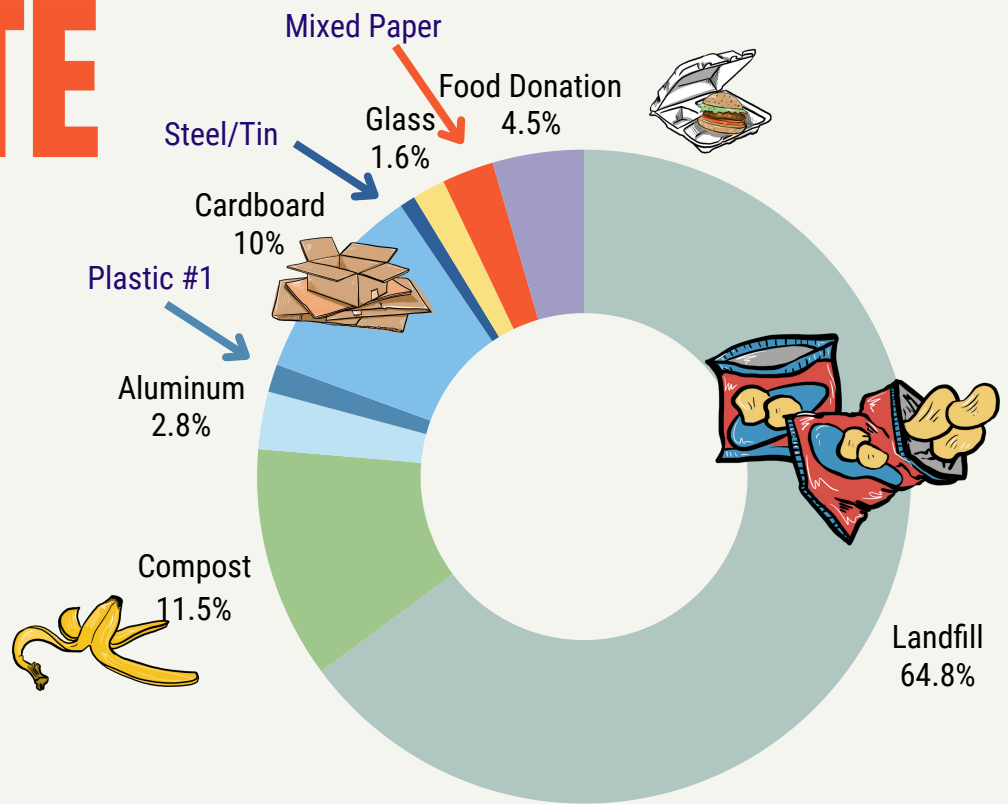
MATERIAL SUMMARY

Material	Volume (Cubic Yards)	Weight	Destination
Landfill	82.5	11,385	Moore & Moore Sanitation
Cardboard	16.5	1749	15 of 16.5 yds recycled 1.5 yds locally burned for heat
Aluminum	10.85	499.1	Locally hauled for recycle
Glass	.75	285	Locally hauled for recycle
Mixed Paper	1.8	450	Locally hauled for recycle
Steel/Tin	1	136	Locally hauled for recycle
Plastic #1	6	242.4	Locally hauled for recycle
Compost	5.1	2019.6	Locally composted in Homer
Food Donation	1	792	Donated to Ninilchik Food Bank
Total Diverted Material	42	6173.1	

Volumes are calculated using waste characterization industry-standard methods.
Weights are calculated based on standard EPA volumetric conversion factors.

WASTE COMPOSITION

The following charts visualize waste streams by weight in pounds.



35.2 %
Diversion by weight

34.8 %
Diversion by volume

4.2 %
Increase in diversion from 2023 by weight.

Things to note regarding the waste produced at the event:

- 4 landfill dumpsters, 30 yards each, were used. 1 30yd recycle dumpster was used.
- Weights of materials are calculated based on standard EPA volume-to-weight conversion factors.
- We added steel and plastic recycling to our diversion streams this year.

COMPOST IS THE MOSTEST

Over 2000 lbs of compost was transported by beloved local celebrity Sally the Dump Truck. With the help of local farmer Connor, our would-be waste will contribute to growing local food in Homer.

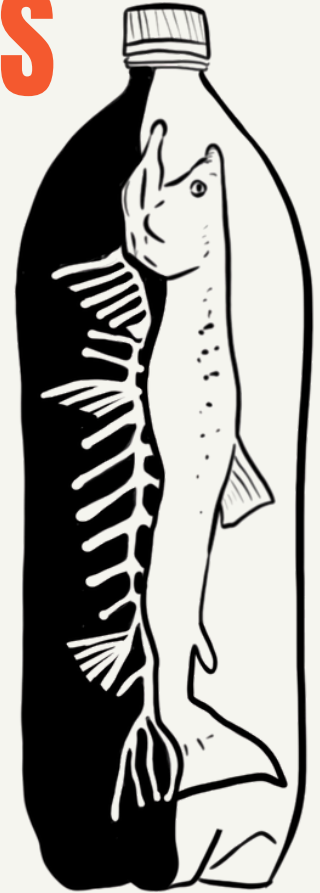


OUR TEAM

Our staff included Soph, Minnow, and Ryan. Special thanks to our fantastic volunteers!



FANTASTIC VOLUNTEERS



Our volunteers were a joy to work with. The Salmonfest community is something special! They learned how to sort waste into recycling and kept the venue clean of litter. The impact we achieved was largely thanks to their enthusiastic efforts!



THIS YEAR IS WE DID BETTER

We thank Salmonfest for working with us to implement the following suggestions for improvement from last year's operation.

- Food Vendor Staging Area for simpler vendor waste management. Designated back of house area only accessible and known to vendors and waste haulers, where vendors can put bagged, sorted waste including compost.
- Food Vendor Waste Accountability Agreements including instructions on proper waste sorting protocol, and how to use the vendor staging area. We provide these resources, using pictures to communicate sorting and best practices.
- Food scrap bins in vendor areas for patron use
- Puncture-resistant gloves for volunteers
- We added plastic and steel to our sorted streams!



ACKNOWLEDGEMENTS

Thank you to **Salmonfest** for your support of WeGenerative and our dedication to the reduction of waste at music festivals. We are grateful to work with such integral and passionate producers.

We'd also like to thank...

The **Fairgrounds maintenance** team, especially Dan and Richard.

The **Kitchen Team** for being dedicated to sorting out food scraps, and diverting edible food for donation.

The Ninilchik Food Bank. We assisted only minimally in edible food waste donation, and are ecstatic to say so. We are grateful to have seen such effective food waste minimization and dedication to feeding the community.

Connor the local farmer and Sally the Dump Truck for taking the compost to nourish local soil.

Our wonderful waste staff, **Minnow and Ryan.**

The Ops Team for their support of our team in many ways. Special thanks to Zach for his heavy machinery assist loading a comically-heavy bin of compost.

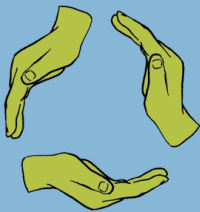
Our local waste haulers at **Moore and Moore Sanitation**, as well as **Alaska Waste and Kenai Borough Transfer Station.**

The **volunteers** who put hard work and positive energies towards sorting waste, maintaining bins, and picking up litter. Special thanks to Alisha, volunteer coordinator.

WE THANK YOU
FOR YOUR CONTINUED SUPPORT IN
OUR PROGRAMS



SEE YOU NEXT YEAR



W E G E N E R A T I V E

WeGenerative
Homer & Fairbanks, AK
503.883.1353
wegenerative.com
Admin@wegenerative.com